

# ALTAIR



## 4 Bellhouse Crescent Moncrieff ACT

4  2  2 

Looking for the perfect family home in a convenient location? This well-presented property is located in the desirable suburb of Moncrieff, just a short drive from the Gungahlin Town Centre. Surrounded by other high-quality homes and positioned on the high side of the street, the home offers a thoughtfully designed layout with maximum living space, a generous backyard and modern inclusions throughout.

Featuring 4 generously sized bedrooms, 2 well-appointed bathrooms, and a split-level design, this home boasts high ceilings to the front lounge and main bedroom, creating a spacious and airy feel throughout.

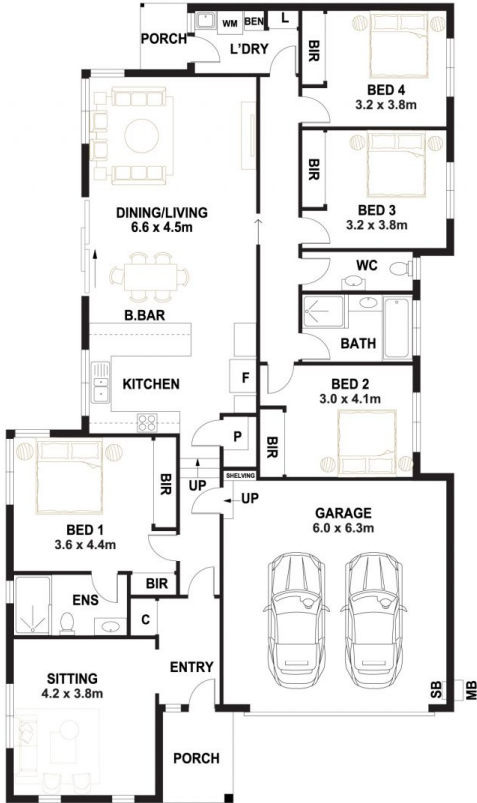
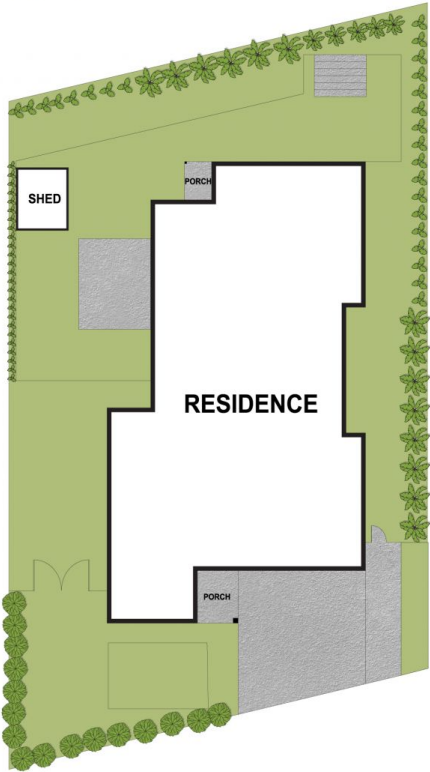
The indoor-outdoor connection is seamless, with easy

[For full version visit the website](https://www.altairproperty.com.au/sale/act/gungahlin/moncrieff/residential/house/7449947)

**Type** : House  
**Building Size** : 207 sqm  
**Land Size** : 556 sqm  
**View** : <https://www.altairproperty.com.au/sale/act/gungahlin/moncrieff/residential/house/7449947>



**Andrew Potts**  
0404 895 162



PLANS SHOWN ARE FOR MARKETING PURPOSES ONLY, ALL DIMENSIONS ARE APPROXIMATE AND NOT TO SCALE. THEY ARE SUBJECT TO ERRORS AND INACCURACIES AND NO LIABILITY WILL BE ACCEPTED. INTERESTED PARTIES SHOULD MAKE THEIR OWN ENQUIRIES.

4 BELLHOUSE CRESCENT, MONCRIEFF