

ALTAIR



85/235 Flemington Road Franklin ACT

2 🛏 2 🚿 2 🚗

This light-filled apartment is perfectly positioned near the Harrison School, Mapleton Avenue Light Rail station, Franklin shops, and Gungahlin Town Centre, ensuring convenience and ease of access to all essential amenities.

The thoughtfully designed floorplan spans 95m² of internal living space, complemented by a spacious 14m² courtyard. The modern kitchen is both stylish and functional, offering ample bench space, generous storage, and Bosch appliances, making it a dream for any home cook. The east-facing living and dining areas are bathed in natural light and flow seamlessly onto the expansive courtyard, creating the perfect setting for entertaining or enjoying your morning coffee. A separate powder room on this level adds extra convenience for guests or busy mornings.

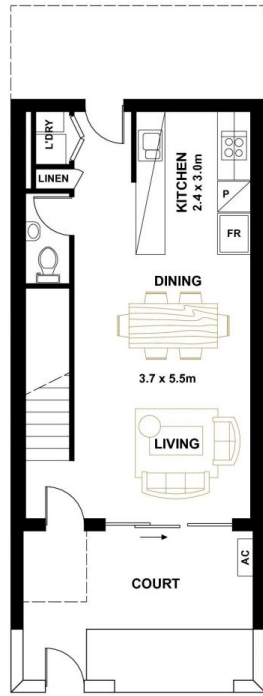
[For full version visit the website](https://www.altairproperty.com.au)

Type : Apartment
Building Size : 95 sqm
View : <https://www.altairproperty.com.au/sale/act/gungahlin/franklin/residential/apartment/8236268>

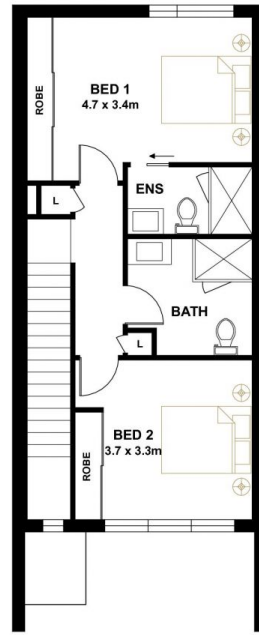


Rahul Mehta
0404 895 162

<https://www.altairproperty.com.au>



LOWER FLOOR



UPPER FLOOR

PLANS SHOWN ARE FOR MARKETING PURPOSES ONLY, ALL DIMENSIONS ARE APPROXIMATE AND NOT TO SCALE. THEY ARE SUBJECT TO ERRORS AND INACCURACIES AND NO LIABILITY WILL BE ACCEPTED. INTERESTED PARTIES SHOULD MAKE THEIR OWN ENQUIRIES.