

# ALTAIR



## 19 Patkin Street Whitlam ACT

5 4 2

Discover the epitome of modern luxury with this near-new residence in the coveted suburb of Whitlam. Offering a generous 356m<sup>2</sup> of built area, this sophisticated home blends architectural brilliance with high-end finishes, all set against the breathtaking backdrop of the Molonglo Valley. Nestled in a family-friendly street, it provides the perfect combination of space, style, and functionality.

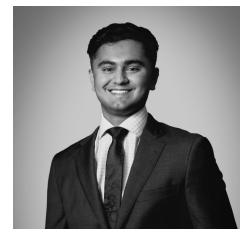
Designed with versatility in mind, the home features a thoughtfully crafted floorplan with 5 bedrooms and 4 bathrooms, catering to families of all sizes. As you step through the grand entrance, you're welcomed into an awe-inspiring foyer with soaring 5.5m ceilings, oversized windows, an elegant chandelier, and timber flooring that exudes warmth and luxury-creating an unforgettable first

[For full version visit the website](https://www.altairproperty.com.au)

**Type** : House  
**Building Size** : 356 sqm  
**Land Size** : 420 sqm  
**View** : <https://www.altairproperty.com.au/sale/act/molonglo-valleyweston-district/whitlam/residential/house/8254985>



**Rahul Mehta**  
0449 820 713

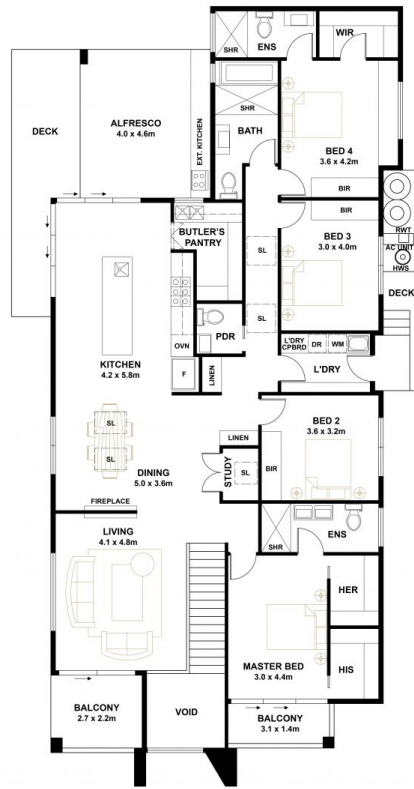


**Arjun Choudhary**  
0450 618 727

<https://www.altairproperty.com.au>



GROUND FLOOR



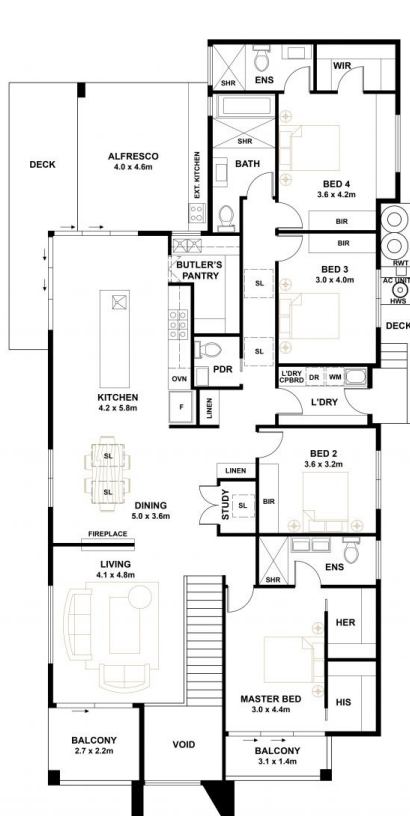
UPPER FLOOR



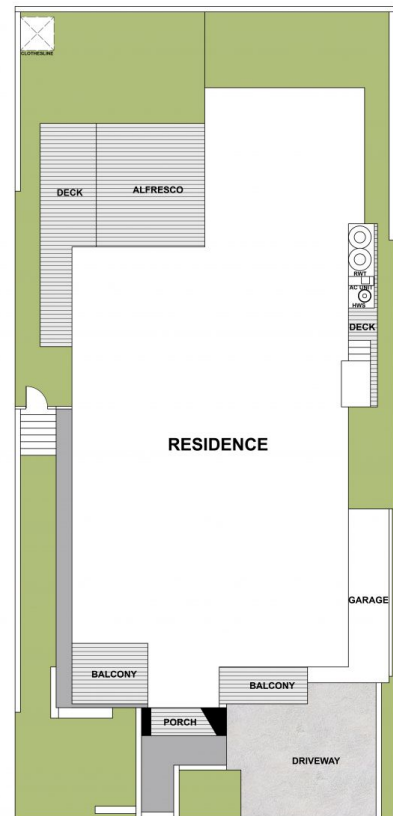
PLANS SHOWN ARE FOR MARKETING PURPOSES ONLY, ALL DIMENSIONS ARE APPROXIMATE AND NOT TO SCALE. THEY ARE SUBJECT TO ERRORS AND INACCURACIES AND NO LIABILITY WILL BE ACCEPTED. INTERESTED PARTIES SHOULD MAKE THEIR OWN ENQUIRIES.



GROUND FLOOR



UPPER FLOOR



SITE PLAN

PLANS SHOWN ARE FOR MARKETING PURPOSES ONLY, ALL DIMENSIONS ARE APPROXIMATE AND NOT TO SCALE. THEY ARE SUBJECT TO ERRORS AND INACCURACIES AND NO LIABILITY WILL BE ACCEPTED. INTERESTED PARTIES SHOULD MAKE THEIR OWN ENQUIRIES.