

# ALTAIR



## 1 Bloomfield Crescent Taylor ACT

4  2  2 

Buyer price guide: From \$990,000

This modern four-bedroom home offers the perfect combination of style, space, and convenience in a low maintenance setting. Designed for easy living, the thoughtfully planned layout features generous proportions, high-end finishes, and seamless indoor-outdoor connectivity-making it ideal for families, professionals, or investors looking for a move-in-ready opportunity.

The heart of the home is the spacious open-plan living, dining, and family areas, bathed in natural light thanks to a desirable North-East aspect. A stunning kitchen showcases premium stone surfaces, a breakfast bar, a walk-in pantry, and quality Fisher & Paykel appliances, including a 900mm

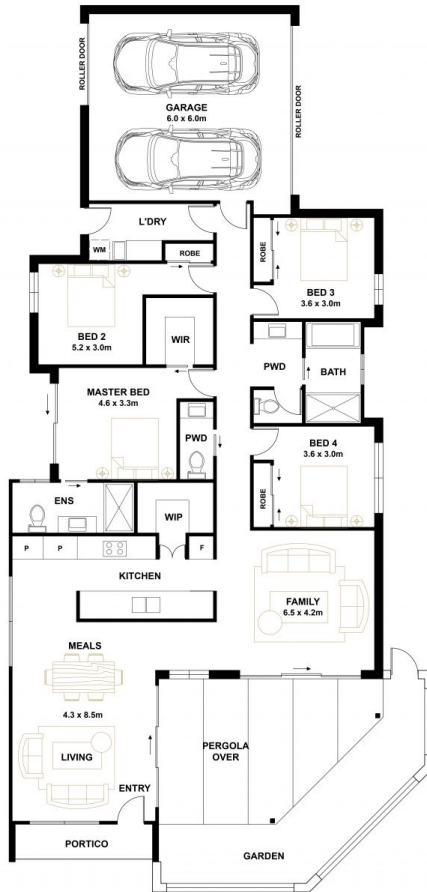
**Type** : House  
**Building Size** : 202 sqm  
**View** : <https://www.altairproperty.com.au/sale/act/gungahlin/taylor/residential/house/8267463>



**Andrew Potts**  
0404 895 162

[For full version visit the website](https://www.altairproperty.com.au)

<https://www.altairproperty.com.au>



**FLOOR PLAN**

PLANS SHOWN ARE FOR MARKETING PURPOSES ONLY, ALL DIMENSIONS ARE APPROXIMATE AND NOT TO SCALE. THEY ARE SUBJECT TO ERRORS AND INACCURACIES AND NO LIABILITY WILL BE ACCEPTED. INTERESTED PARTIES SHOULD MAKE THEIR OWN ENQUIRIES.