

ALTAIR



1 Maggie Scott Terrace Whitlam ACT

6 3 2

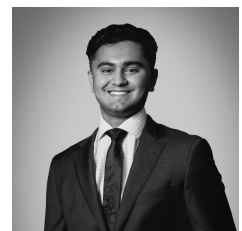
Discover refined family living in this brand-new architecturally designed home, offering a separate two-bedroom apartment upstairs. 1 Maggie Scott Terrace has the perfect fusion of luxury living with space, style, and versatility in one of Whitlam's most promising streets. Positioned to capture a desirable north-facing aspect and surrounded by nature reserves and walking trails, this spacious residence is an ideal choice for those seeking a premium lifestyle in a thriving community.

With 273m² under roof and set on a 414m² block, the home has been carefully designed to accommodate modern living, featuring a well-considered layout that includes a self-contained two-bedroom apartment on the upper level. The lower ground floor spans 181m² of

Type : House
Price : \$ 1,300,000
Building Size : 273 sqm
Land Size : 414 sqm
View : <https://www.altairproperty.com.au/sale/act/molonglo-valleyweston-district/whitlam/residential/house/8482198>



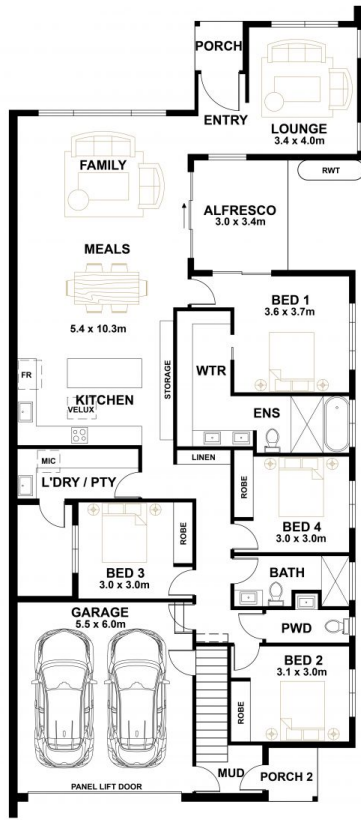
Rahul Mehta
0410 820 712



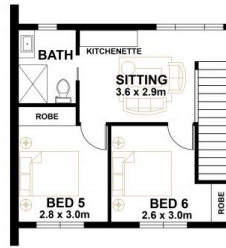
Arjun Choudhary
0450 618 787

[For full version visit the website](https://www.altairproperty.com.au)

<https://www.altairproperty.com.au>



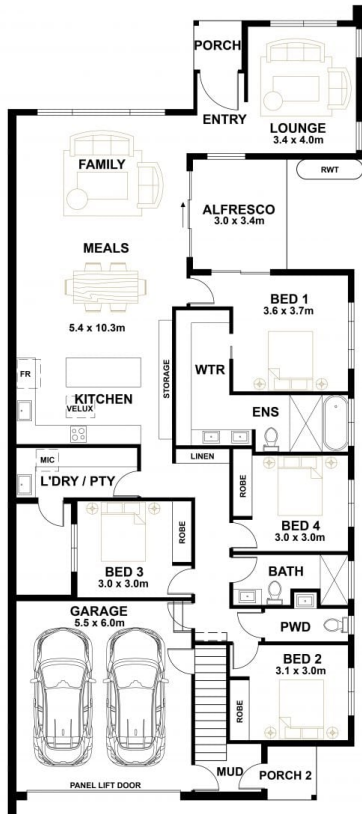
GROUND FLOOR PLAN



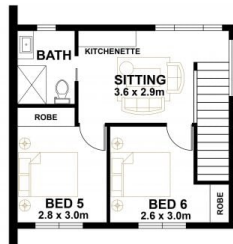
UPPER FLOOR PLAN



PLANS SHOWN ARE FOR MARKETING PURPOSES ONLY, ALL DIMENSIONS ARE APPROXIMATE AND NOT TO SCALE. THEY ARE SUBJECT TO ERRORS AND INACCURACIES AND NO LIABILITY WILL BE ACCEPTED. INTERESTED PARTIES SHOULD MAKE THEIR OWN ENQUIRIES.



GROUND FLOOR PLAN



UPPER FLOOR PLAN



SITE PLAN



PLANS SHOWN ARE FOR MARKETING PURPOSES ONLY, ALL DIMENSIONS ARE APPROXIMATE AND NOT TO SCALE. THEY ARE SUBJECT TO ERRORS AND INACCURACIES AND NO LIABILITY WILL BE ACCEPTED. INTERESTED PARTIES SHOULD MAKE THEIR OWN ENQUIRIES.