

# ALTAIR



**25/10 Lonsdale Street Braddon ACT**

1  1  1 

Positioned in the vibrant centre of Braddon, this spacious North-East facing corner apartment delivers the ultimate in lifestyle, light and location. Set within the popular 'Arte' development, the residence stands apart with its generous proportions, intelligent floor plan and elevated corner position.

From the moment you step inside, you'll be impressed by the scale of the living and dining areas—designed for both everyday comfort and effortless entertaining. These spaces flow seamlessly onto a private balcony, where Mount Ainslie forms a stunning natural backdrop to your morning coffee or evening unwind.

The modern kitchen is beautifully appointed with stone

[For full version visit the website](#)

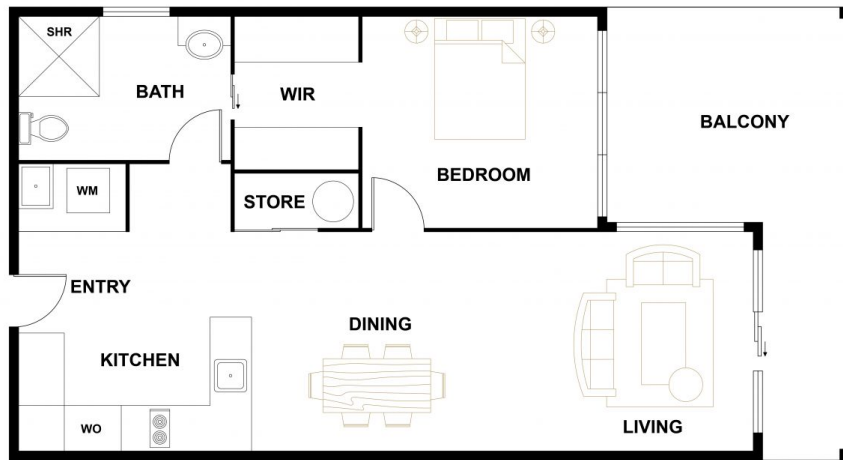
**Type** : Apartment

**View** : <https://www.altairproperty.com.au/sale/act/inner-north/braddon/residential/apartment/8586724>



**Andrew Potts**  
0404 895 162

<https://www.altairproperty.com.au>



**FLOOR PLAN**

PLANS SHOWN ARE FOR MARKETING PURPOSES ONLY, ALL DIMENSIONS ARE APPROXIMATE AND NOT TO SCALE. THEY ARE SUBJECT TO ERRORS AND INACCURACIES AND NO LIABILITY WILL BE ACCEPTED. INTERESTED PARTIES SHOULD MAKE THEIR OWN ENQUIRIES.