

ALTAIR



12 Lucy Gullett Circuit Chisholm ACT

4 🏠 2 🚗 3 🚗

Set on a 928m2 block, in a tightly held pocket of Chisholm, 12 Lucy Gullett Circuit features a substantial single-level residence which delivers relaxed family living on a scale that will truly surprise. The expansive floorplan of 258m2 of living offers exceptional space, comfort, and beautifully upgraded outdoor living.

From the moment you arrive, the home's beautifully landscaped front garden and elevated position create a welcoming sense of privacy and presence with a leafy outlook. Fully irrigated gardens along the front and side provide year-round greenery with minimal upkeep; while the home's wide frontage and established setting offer a peaceful suburban feel with stunning mountain views.

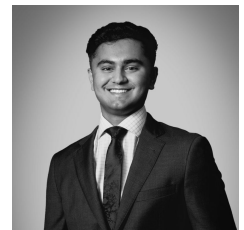
Type : House

Price : \$ 1,100,000

View : <https://www.altairproperty.com.au/sale/act/tuggeranong/chisholm/residential/house/8610044>



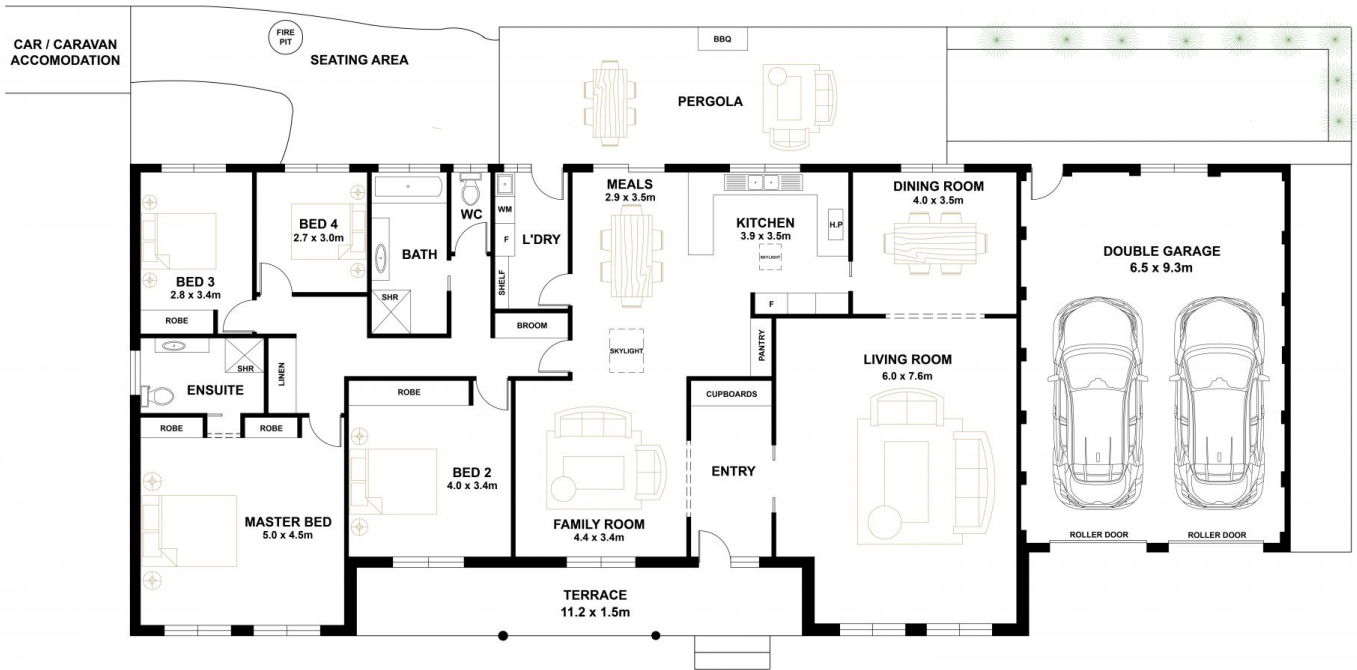
Rahul Mehta
0404 895 162



Arjun Choudhary
0404 895 162

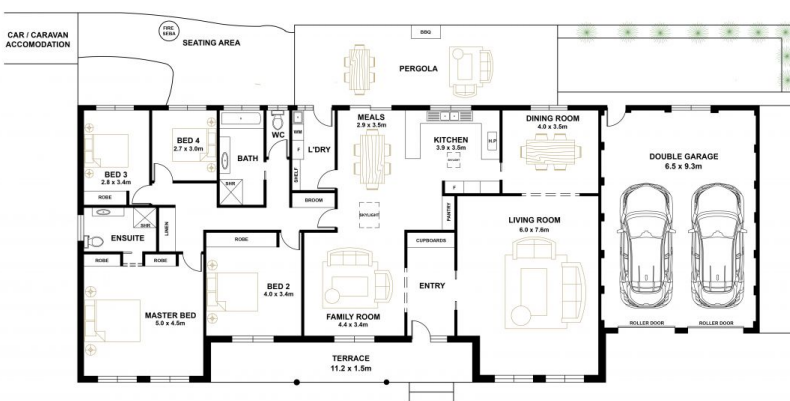
[For full version visit the website](https://www.altairproperty.com.au)

<https://www.altairproperty.com.au>

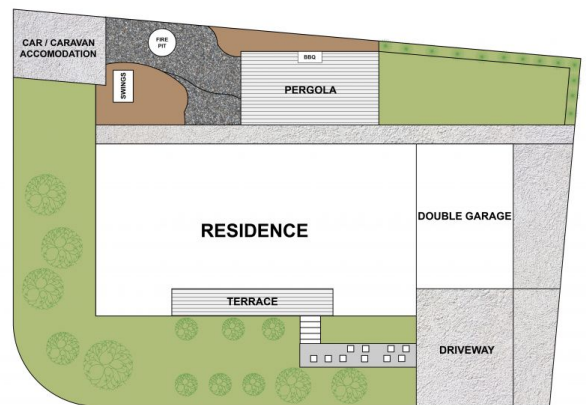


FLOOR PLAN

PLANS SHOWN ARE FOR MARKETING PURPOSES ONLY, ALL DIMENSIONS ARE APPROXIMATE AND NOT TO SCALE. THEY ARE SUBJECT TO ERRORS AND INACCURACIES AND NO LIABILITY WILL BE ACCEPTED. INTERESTED PARTIES SHOULD MAKE THEIR OWN ENQUIRIES.



FLOOR PLAN



SITE PLAN

PLANS SHOWN ARE FOR MARKETING PURPOSES ONLY, ALL DIMENSIONS ARE APPROXIMATE AND NOT TO SCALE. THEY ARE SUBJECT TO ERRORS AND INACCURACIES AND NO LIABILITY WILL BE ACCEPTED. INTERESTED PARTIES SHOULD MAKE THEIR OWN ENQUIRIES.